



# METALLIC

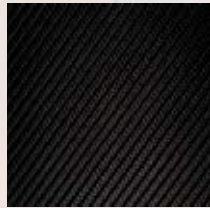
3M DI-NOC



CA-419



CA-420



CA-421



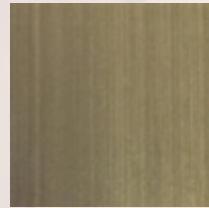
ME-904



PA-039



PA-045



ME-1223



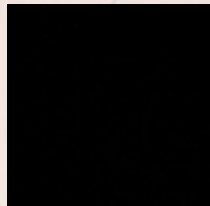
ME-1434



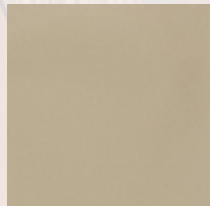
ME-1435



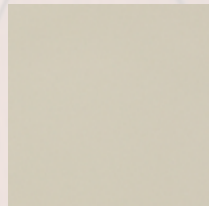
ME-377



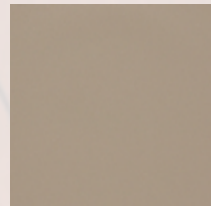
ME-379



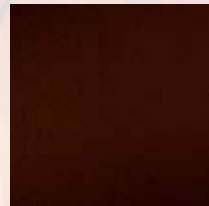
PA-046



PA-180



PA-183



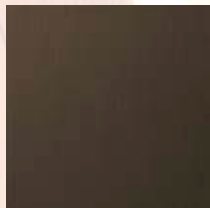
PA-683



AM-1697 **NEW**



AM-1699 **NEW**



AM-1702 **NEW**



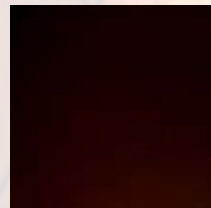
AM-1721 **NEW**



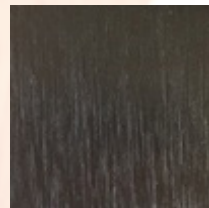
VM-1691 **NEW**



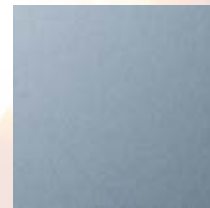
VM-1692 **NEW**



VM-305



VM-306



ET-1772 **NEW**



ET-1775 **NEW**



AE-1719 **NEW**



Suitable for external applications



Suitable for external applications but not recommended for application to PVC coated materials



Not recommended for use on compound curves



Not recommended for butt joint applications

**NEW**

One of the new 240 patterns introduced in 2014



Horizontal grain direction



Pattern is large scale  
View full pattern at [3M.com/AMD](http://3M.com/AMD)



Available in EX series



Available in both horizontal and vertical grain pattern options



Also available as a non-PVC version (E-Series)  
NB: E-Series films are non-stock items and are not suitable for application to compound curves

# METALLIC

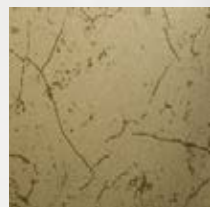
COVER STYLE



NE47



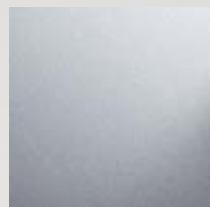
NE49



P1



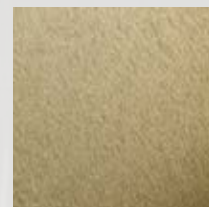
P2



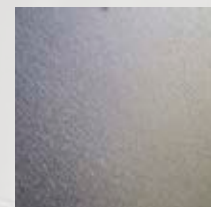
Q1



Q2



Q3



Q50



Q51



R3



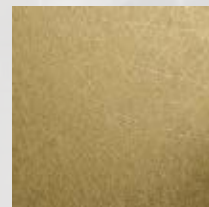
S1



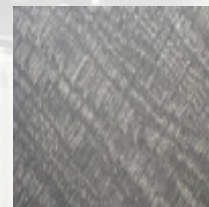
S7



T1



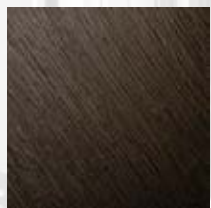
T2



T50



U16



Y4



Z2



Z8