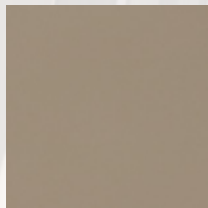


SINGLE COLOUR

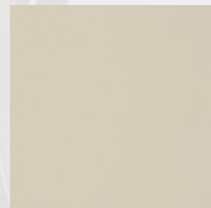
3M DI-NOC



PS-022



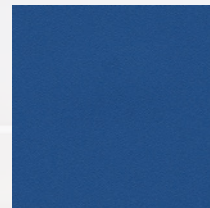
PS-034



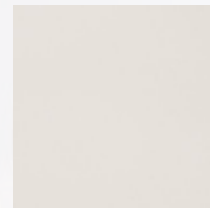
PS-091



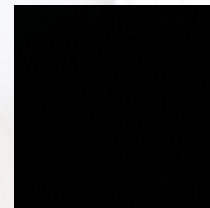
PS-1187



PS-140



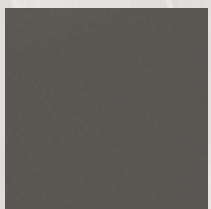
PS-503



PS-504



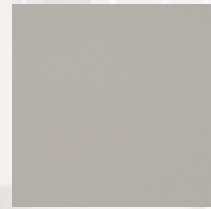
PS-910



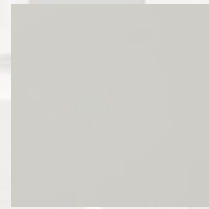
PS-949



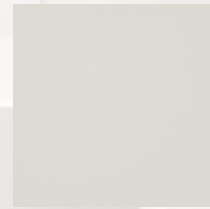
PS-950



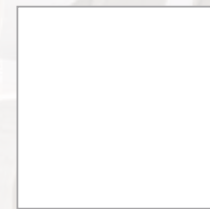
PS-952



PS-954



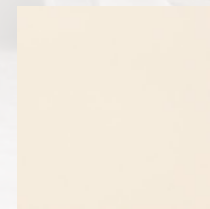
PS-955



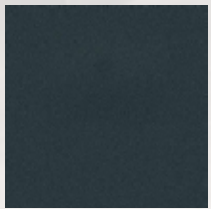
PS-959



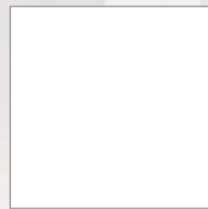
PS-971



PS-983



PS-992



PWF-500



WH-111

Suitable for external applications

Suitable for external applications but not recommended for application to PVC coated materials

Not recommended for use on compound curves

Not recommended for butt joint applications

NEW One of the new 240 patterns introduced in 2014

Horizontal grain direction

Pattern is large scale. View full pattern at 3M.com/AMD

Available in EX series

Available in both horizontal and vertical grain pattern options

Also available as a non-PVC version (E-Series). NB: E-Series films are non-stock items and are not suitable for application to compound curves